

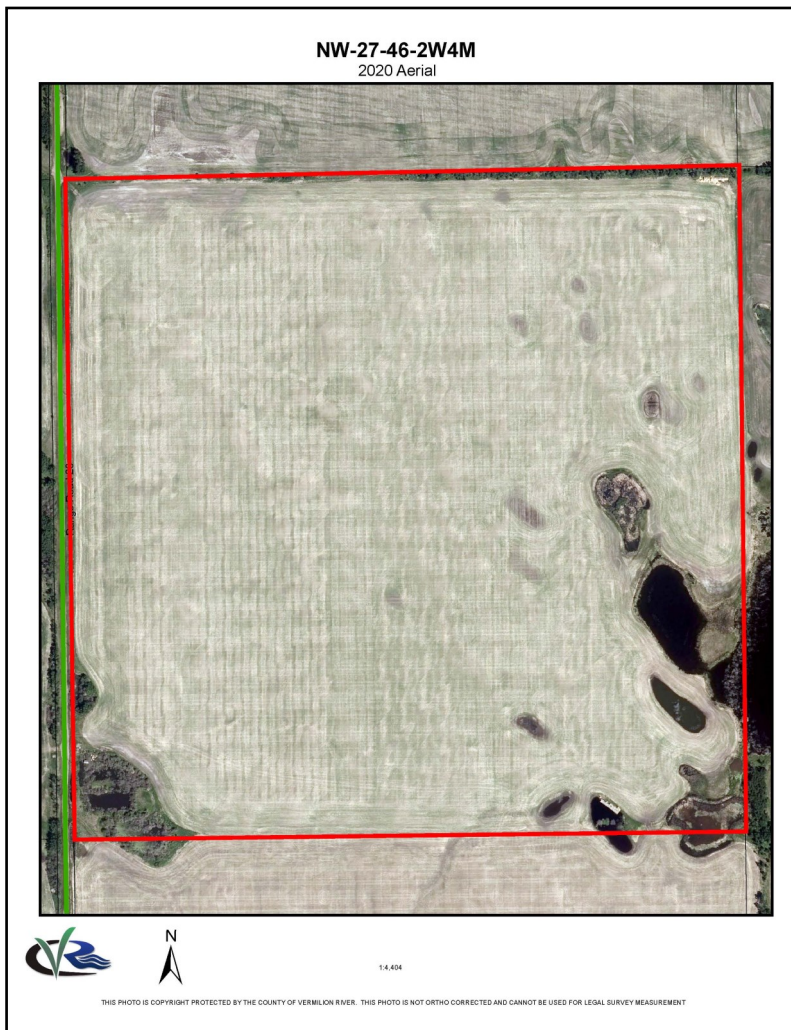
LAND FOR SALE



NW-27-46-2W4M Adjacent to Range Road 23 North of Township Road 464

SITE DESCRIPTION:

- 160 acres (150 arable acres)
- Agricultural District
- More information can be found on our website: [Tenders & For Sale](#)



BID PROCEDURE:

- Bids will be accepted at the County Office until March 5, 2021 at 12:00 Noon MST
- Sale is subject to Conditions of the County
- Property is sold "AS IS"

RESERVE BID:
\$557,000

**PRICE DOES NOT INCLUDE
TRANSFER COSTS,
SERVICING COSTS OR GST.**

For more Information contact:
Planning and Development Department
County of Vermilion Office

Box 69, 4912 – 50 Avenue, Kitscoty, AB (Ph) 780-846-2244 planning@county24.com